
AUTOMATION + ACCESSORIES

Manufactured inhouse by SEA



INDEX

CONTACT US

Downee Offices	3
Technical Support	3

TECHNICAL



Inverter	5
Hydraulics	6
Brushless	7

SWING OPERATORS

Surf 450	8
Kite 500	9
Half Tank	10
Super Full Tank 500	11
Super Full Tank 1000	12
Joint	13

SLIDE OPERATORS

Saturn Super Fast 500	14
Saturn Fast 1200	15
Boxer 2000	16
Lepus Industrial 1500	17
Lepus Industrial 2000 230V	18
Lepus Industrial 2000 24V	19
Big 2000	20
Big 4000	21
Big 6000	22

BOOM OPERATORS

Sprint	23
Vela Industrial	24

CONTROLLERS

Unigate Controller with Inverter	25
User Controller	26

ACCESSORIES

Cloud App	27
Safety and Access Control	28
Receivers and Controllers	29

Downee

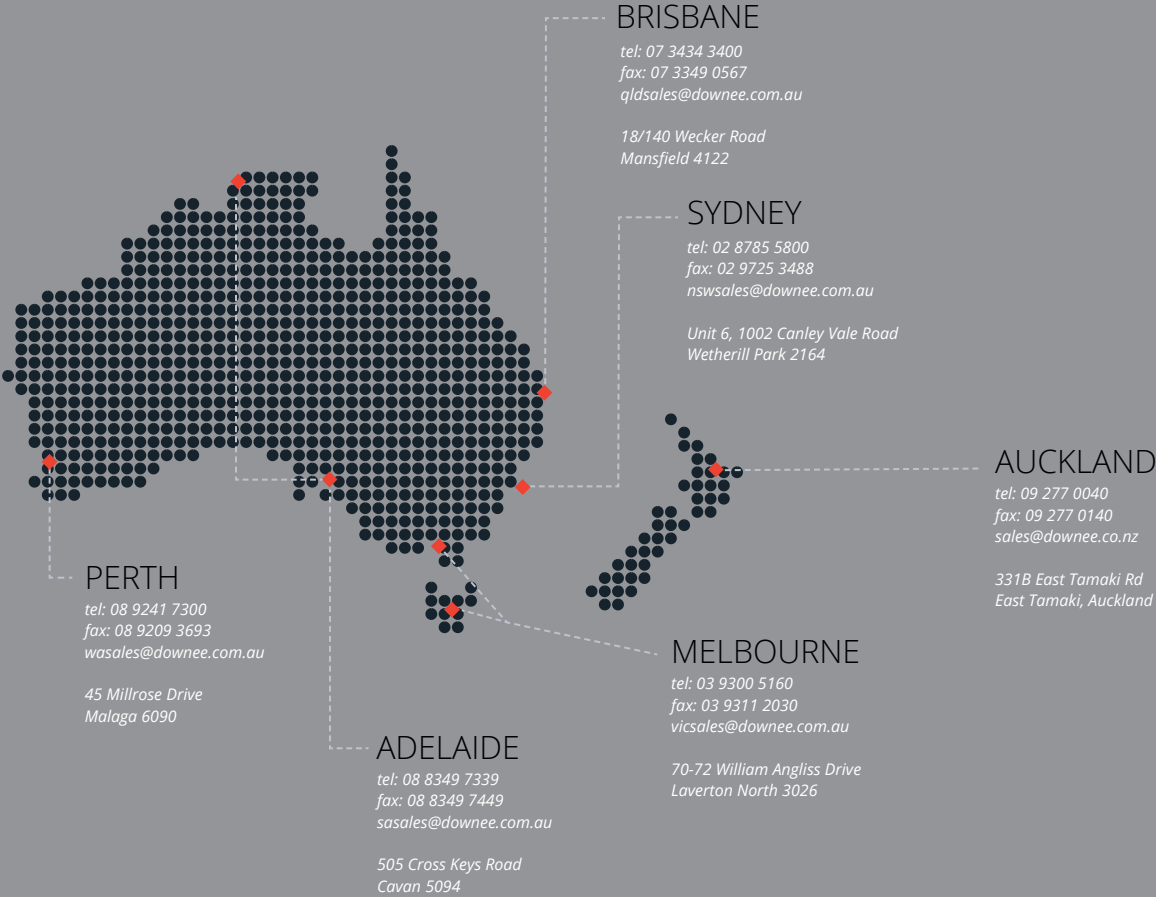
CONTACT
US

OFFICIAL
PARTNER

Downee is the official Australasian partner to SEA Automation Systems. Our commitment as partner, is to supply SEA products across Australia and New Zealand with a high-level of service, technical support and commitment to professional installers. This includes keeping all SEA products presented in this catalogue in stock and available for next-day despatch.

SEA is a performance automation brand renowned globally for manufacturing advanced products in high-cycle hydraulic automation systems.

Our commitment extends to supporting all SEA installers and warranty claims for operators still within the warranty period.



TECHNICAL
TRADE ASSIST

AUSTRALIA
1800 241 733

NEW ZEALAND
0800 241 733

SEA Operators are
Same Day Despatch
(orders before 2pm)

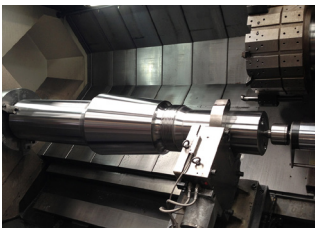
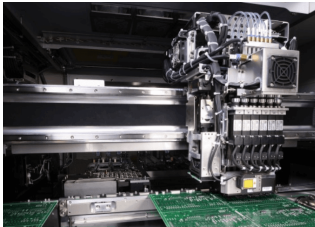


MADE @SEA
MADE IN-HOUSE

COMPLETE QUALITY CONTROL

SEA's core business is manufacturing hydraulic automation products completely in-house to oversee the entire process while ensuring complete quality control.

Thanks to this strategy, SEA produces a wide range of reliable products, to immediately achieve an important share of markets worldwide. Today SEA is a leading growing group with customers' service centers located worldwide.



COMMITMENT TO
EXCELLENCE

Reliability, Design, High Performance, Ease of Use. These are the core of SEA's philosophy and the basis of our success which has made it possible to meet the market demands and achieve the loyalty of customers throughout over 50 countries.

All SEA products are manufactured in-house at our modern manufacturing plant of more than 11.000 sqm based in Italy.

Our products undergo a progressive series of controls during all phases of the production cycles. Strict tests are carried out in our technical laboratories to make sure that each product respects the security, reliability and durability standards, the current regulations and market demands.

In a short 25-years SEA has established itself a leader in the field of perimeter automation. Our customers include the elite of the European perimeter protection industry. They demand quality, competency and solutions to complex issues. Most of all they expect reliability, smart design, a high performance product and easy to use.

INVERTER TECHNOLOGY

WHY USE AN INVERTER DRIVE MOTOR?

The standard power supply frequency in Australia and New Zealand is 50Hz.

By using a frequency variator, more commonly referred to as an inverter, it becomes possible to change the operating frequency within SEA gate operators from a very low operating frequency up to almost 100Hz, depending on the operator type.

The speed of an inverter driven AC operator is proportional to its operating frequency, so as the frequency level is increased or decreased, so is the speed of the operator.

The main benefit of an Inverter Drive operator, is no loss of torque, even when operating at very slow speeds, including the slow down phase of the gate operator.

Conventional operators which use other forms of speed control, suffer from reduced torque as the operating speed is reduced. Non inverter AC gate operators also suffer from higher operating temperatures when exposed to high duty cycles, or when installed in more demanding applications such as gates on an incline, or telescopic gates. In these instances, conventional AC operators may shut down through thermal overload, if the demand placed upon them is too great.

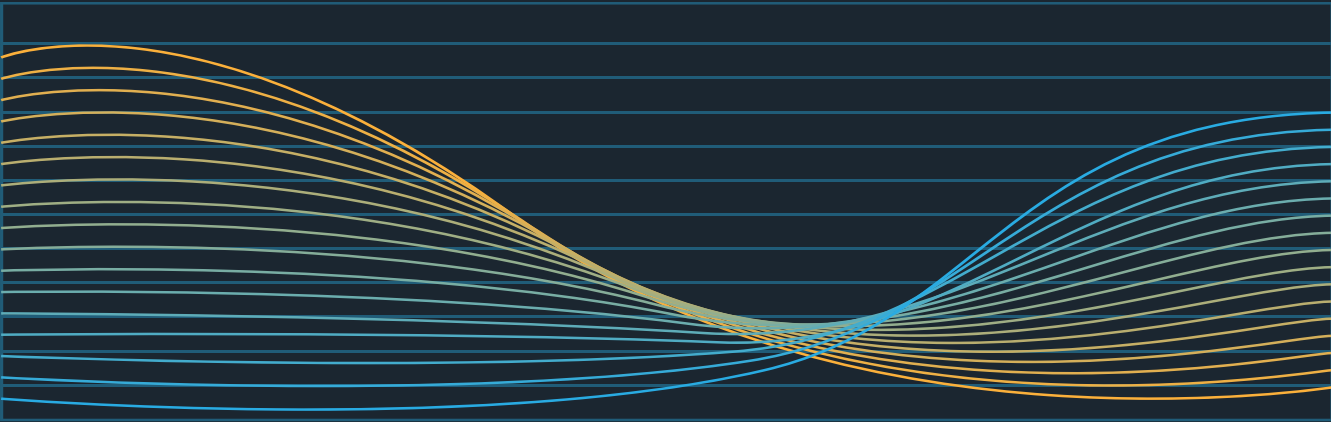
SEA Inverter Drive operators cycle much cooler in these applications, as they are specifically designed for intensive use with non triac capacitors, and therefore suit high torque applications. Some gate operator manufacturers source “off the shelf” generic inverter drives from the open market, which may compromise the performance of the operator.

SEA Inverter Drives are designed, engineered and manufactured by SEA specifically to suit their own gate operators, and are filtered, to reduce the effects of electrical noise and interference with other wireless devices.

Since SEA design and manufacture their own Inverter Drives, they are able to provide firmware updates as technological improvements are made, and offer a range of inverter sizes to suit the specific operator.

The Inverter Drive is controlled by the same logic control board, regardless of the size of the Inverter Drive, and the logic control board has the capacity to control two separate Inverter Drives for double swing gate operators.

A USB cable provides the connection between the Inverter Drive and the logic control board, simplifying the installation process, and also provides electrical protection against voltage spikes. By separating the logic control board from the Inverter Drive, reduces the replacement cost, should they ever be required. To ensure after sales backup is available, a comprehensive range of spare parts, including Inverter Drives and logic control boards are readily available from Downee.



Most SEA Inverter Drive operators stocked by Downee, require only a 230V AC single phase mains power supply. The output of the Inverter Drive provides a three phase power supply which is connected directly to the electric motor.

The operating speed and direction of the operator is easily changed by parameter settings on the logic control board. The speed parameters are expressed as percentages, and the output frequency is controlled electronically to provide the desired speed. The operator direction is also controlled electronically, eliminating the need for swapping the output phase wiring to the electric motor.

SEA Inverter Drive operators are robust, reliable and deliver optimum performance, even in the most demanding of applications.

HYDRAULICS IS THE FUTURE

In recent decades advances in manufacturing and materials have dramatically improved overall performance.

With decades of experience in the manufacturing of hydraulic motors, SEA have perfected the integration of the hydraulic motor, control unit and inverter technology to achieve peak performance. Despite market perception of some gate installers on hydraulic motors, SEA's range of gate operators are the logical choice for Industrial and Commercial applications.

Why install a SEA Hydraulic motor?

- Fast
- Easily maintained
- Powerful
- Long life span
- High duty cycle
- Mechanical adjustable motor torque
- Integrated motor locking
- Unigate control board for all hydraulic motors



VARIABLE SPEED WITH MAXIMUM TORQUE

The SEA hydraulic range of operators have been developed and perfected over 25 years. As SEA design and manufacture their own pumps, the build of their operators has been engineered from a range of selected in house manufactured components. The key components are:

- Hydraulic pump configuration (gear pump or lobe pump)
- Pump capacity (up to 4L for the lobe pump and 6L for the gear pump)
- Electric motor (2 pole or 4 pole to suit the operator speed range of 2800rpm and 1400rpm respectively)
- UNIGATE Inverter Drive

Using a combination of the above components, a variable operating speed whilst delivering high torque is achieved, to provide the optimum output for each Hydraulic operator. This is particularly valuable in the slow down opening and closing stroke.

DUTY CYCLE

SEA Hydraulic operators excel in high duty cycle applications. Not only are they engineered with Inverter Drive motors for this exact purpose, but when combined with SEA's hydraulic pump technology, these operators deliver superior performance, even in the most demanding of duty cycle applications. This makes the SEA range of Hydraulic operators the obvious choice in high traffic applications, including public car parks, emergency services, Industrial compounds and harsh environments due to the IP55 rating of their linear operators.

PUMP CONFIGURATION AND CAPACITY

SEA use both Gear Pumps and Lobe Pumps, depending on the specific operator. Gear Pumps are used on large operators, due to their ability to consistently pump high volumes of hydraulic fluid, particularly on the linear operators which have a stroke up to 1000mm on their largest Super Full Tank operator. These larger pumps have up to 6L of hydraulic fluid capacity, which ensures smooth and consistent performance over the entire movement of the gate leaf. The smaller Hydraulic operators utilise a Lobe Pump. These pump types provide a more efficient delivery of Hydraulic fluid where smaller volume capacities are required. Generally, the Lobe Pumps are used with capacities of less than 4L.

INTEGRATED LOCK

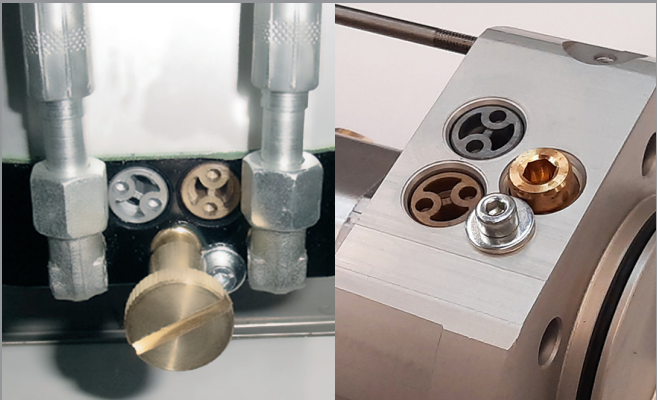
SEA Hydraulic operators can be configured with an integrated lock within the hydraulic fluid circuit. The flexibility of this lock design, allows for the operator to be configured with an integrated lock in the following gate operator conditions:

- Locked in open position
- Locked in closed position
- Locked in both open and closed positions
- No integrated lock

***Please note that external gate locks are always recommended on larger gates, as specified for each respective model.*

HYDRAULIC LONGEVITY

Unlike electromechanical operators, there is no mechanical gear drive train with Hydraulic operators. This translates to a significant reduction in general wear and tear, and there are no mechanical losses which often exist through transmission gear ratios. SEA Hydraulic operators are easily serviced, with the majority of maintenance limited to an occasional hydraulic fluid change, and if necessary, oil seal replacement. Replacement seals and hydraulic fluid are readily available as spare parts from Downee. This means the expected lifespan of a Hydraulic operator, will far exceed an electromechanical operator when placed in the same application. We have case studies of SEA hydraulic operators still in service over 20 years later, which is a testament to the quality and longevity you can expect from the SEA operators.



SEA Hydraulic operators are built for High Duty cycle and demanding Commercial and Industrial applications, where maximum torque is required. They require minimal service intervals, and are built to significant IP ratings to ensure they deliver consistent ongoing performance, even in the harshest of environments throughout Australia and New Zealand.

BRUSHLESS TECHNOLOGY

Intensive Use

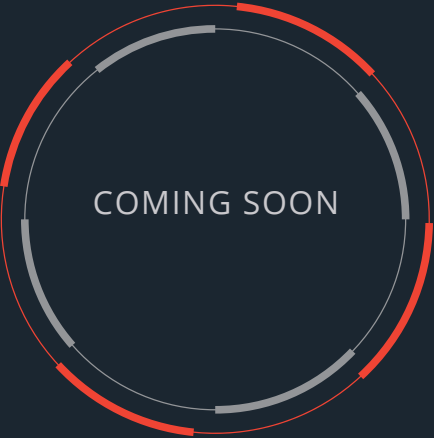
Thanks to their background in manufacturing electrical motors, SEA has identified a need in the market for an improved range of operators which can follow the trend of other industries by implementing a range of brushless electric motors. This new and complex technology is a direct result of SEA's innovation and commitment to manufacturing industry leading products. SEA plan to offer a range of brushless products in both electromechanical and hydraulic operators which will help to cover some of the commercial and industrial applications and of course residential as well.

Where we see brushless being used:

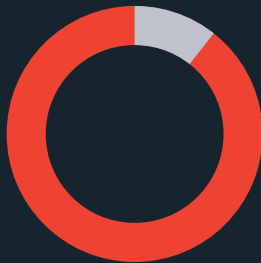
- High duty cycle – driven in a similar way to an inverter.
- 36V operated – low-power consumption for solar applications and increased battery run time
- Can add battery backup/solar operation
- Reverse in case of obstacle
- Setting ramps of acceleration and deceleration for smooth operation
- Motor without brushes and cummutator
- Same logic controller as the UNIGATE.
- Built in timer, digital display, 2 x relays to activate any command, battery back up for the timer.

Downee looks forward to the opportunity to provide an innovative solution valued by the industry.

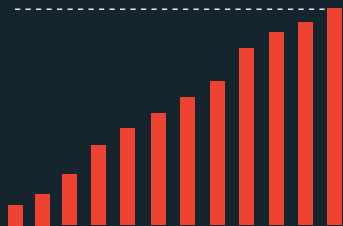
Watch this space. Your local Downee team member can keep you up to date, or register on our website for our regular product updates.



***Brushless technology provides intensive use
and a motor with constant torque.***



85-90% lower power consumption



Max torque across a higher rev range

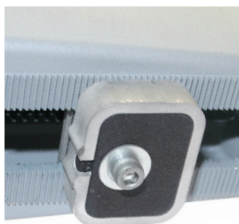
SURF 450

- 21 SECONDS TO 90°
- 50 % DUTY CYCLE
- 4.5 MAXIMUM GATE LENGTH

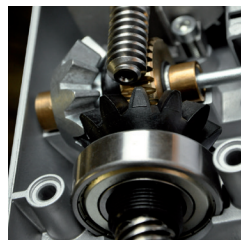
Surf is a robust, 24V electromechanical swing gate operator with powder coated cast aluminium body.

For gates up to 4.5m or 400kg

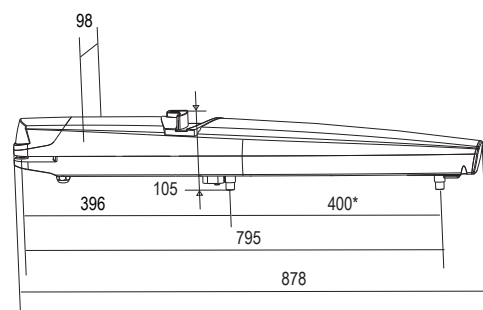
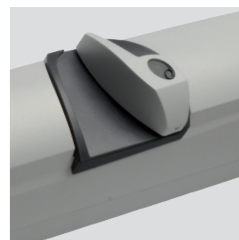
BUILT-IN ELECTROMECHANICAL LIMIT SWITCHES



ALL METAL INTERNAL COMPONENTS



LOCKABLE CAST ALUMINIUM RELEASE LEVER



Surf 450 can be used on solar applications or add battery backup on request.

400KG

CONTROLLER



DIGITAL PROGRAMMING

24V SURF 450 is supplied with USER-2 Digital control board housed in an IP rated enclosure with transformer.

Details on page 26



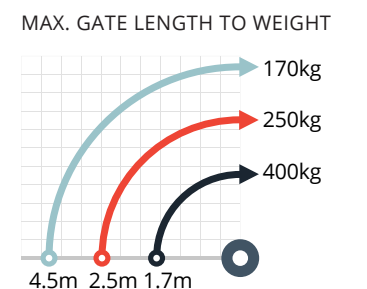
BACK MOUNT
Adjustable post mount brackets. No welding.
AAC-BRASU



FRONT MOUNT
Bolt-on gate brackets.
AAC-BRASUA



OUT SWING BRACKETS
Allows gates to open outwards.
AAC-BRASUO



ORDER CODE	SURF450
POWER SUPPLY	SINGLE PHASE
MOTOR VOLTAGE	24 V (DC)
MOTOR POWER	60 W
MAX. OPEN ANGLE	120 °
MAX. CYCLES PER HOUR	90*
DUTY CYCLE	50 %*

MAX. GATE WEIGHT	400 KG
MAX. GATE LENGTH	4.5 M**
TIME TO 90°	21 SEC
MAX. THRUST	2000 N
LIMIT SWITCH	MECHANICAL-ELECTRONIC
DIMENSIONS (H-W-L)	98, 98, 878
WORKING TEMP.	-20 °/+55 ° C

*Maximum duty cycle based on the first working hour in a testing environment.
** Electric/magnetic locks should be fitted on gates 2m+ to protect gate and operator from damage by wind or forced entry.

KITE 500

Kite is a robust, 24v Electromechanical swing gate operator with powder coated cast aluminium body.

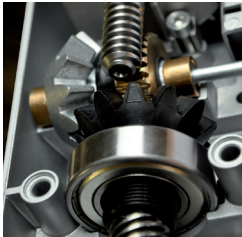
Stops needed in open & closed positions.

- 23 SECONDS TO 90°
- 50 % DUTY CYCLE
- 5.0 MAXIMUM GATE LENGTH

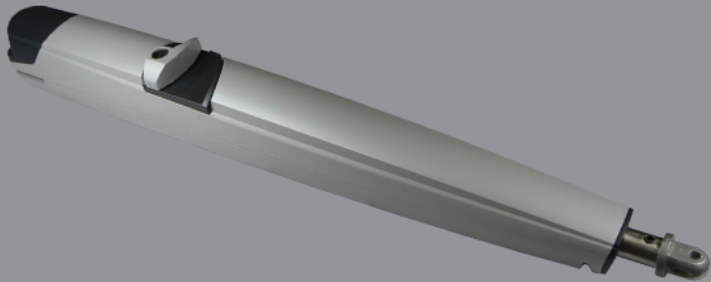
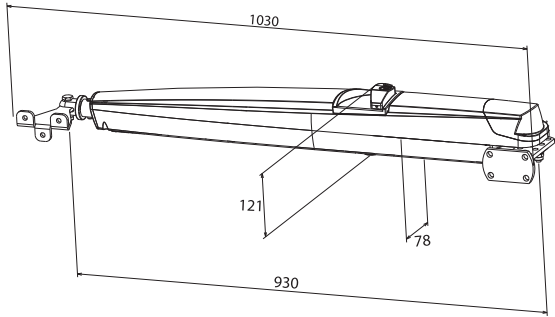
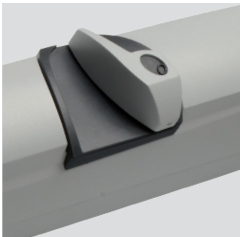
ACCEPTS ESUN Q TO ADD BATTERY BACK UP OR SOLAR



ALL METAL INTERNAL COMPONENTS



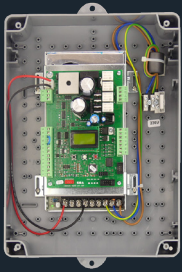
LOCKABLE CAST ALUMINIUM RELEASE LEVER



Kite 500 can be used on solar applications or add battery backup on request.

500KG

CONTROLLER



DIGITAL PROGRAMMING

24V KITE 500 is supplied with USER-2 Digital control board housed in an IP rated enclosure with transformer.

Details on page 26



BACK MOUNT
Adjustable post mount brackets. No welding.
AAC-BRASU

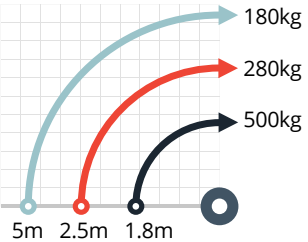


FRONT MOUNT
Bolt-on gate brackets.
AAC-BRASUA



OUT SWING BRACKETS
Allows gates to open outwards.
AAC-BRASUO

MAX. GATE LENGTH TO WEIGHT



ORDER CODE	KITE500	MAX. GATE WEIGHT	500 KG
POWER SUPPLY	SINGLE PHASE	MAX. GATE LENGTH	5.0 M**
MOTOR VOLTAGE	24 V (DC)	TIME TO 90°	23 SEC
MOTOR POWER	60 W	MAX. THRUST	2000 N
MAX. OPEN ANGLE	120°	LIMIT SWITCH	PHYSICAL STOPS REQUIRED
MAX. CYCLES PER HOUR	90*	DIMENSIONS (H-W-L)	121, 78, 930
DUTY CYCLE	50 %*	WORKING TEMP.	-20° /+55° C

*Maximum duty cycle based on the first working hour in a testing environment.
** Electric/magnetic locks should be fitted on gates 2m+ to protect gate and operator from damage by wind or forced entry.

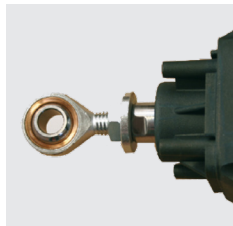
HALF TANK

Hydraulic swing gate operator suitable for intensive use applications or gates with medium to heavy infill and windy locations.

Max. leaf length of 7m when used with suitable lock in open and closed positions.

- 16 SECONDS TO 90°
- 100 % DUTY CYCLE
- 7.0 MAXIMUM GATE LENGTH

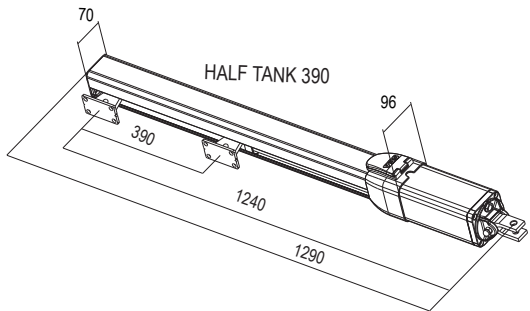
SPHERICAL JOINT FOR STROKE ADJUSTMENT



METAL MANUAL RELEASE



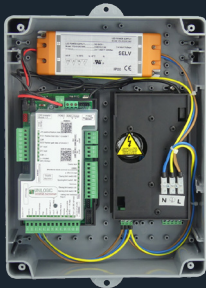
POSITION GATE LINEAR ENCODER



HYDRAULIC DRIVE Hydraulic operators suit intensive use environments and their high thrust output makes them suitable for extra large gates.

700KG

CONTROLLER



INVERTER EQUIPPED

UNIGATE uses a separate inverter power module and control board to achieve optimum heat management of power module components. The Inverter power module is connected to control board via USB cable.

Details on page 25



LIMIT SWITCH
Mechanical/electronic limit switch kit.
AAC-LIMITHT390



MECHANICAL STOPS
Mechanical stops.
AAC-STOPHT390



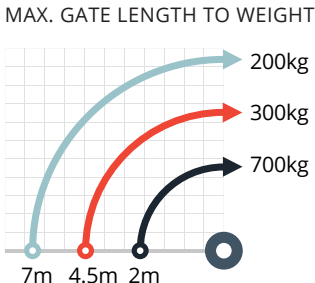
POSITION GATE
Absolute linear encoder.
AAC-ENCHT390



OUTSWING BRACKETS
AAC-BRAHTO



MOUNT BRACKETS
AAC-BRAHT



ORDER CODE	HTANK-OC	MAX. GATE WEIGHT	700 KG
POWER SUPPLY	SINGLE PHASE	MAX. GATE LENGTH	7 M**
MOTOR VOLTAGE	3-Phase 230 V (AC)	TIME TO 90°	16 SEC
MOTOR POWER	220 W	MAX. TORQUE	6400 N
MAX. OPEN ANGLE	125 °	LIMIT SWITCH	MECHANICAL-ELECTRONIC
MAX. CYCLES PER HOUR	200*	DIMENSIONS (H-W-L)	96, 96, 1290
DUTY CYCLE	100 %*	WORKING TEMP.	-20 °/+55 ° C
PUMP SIZE	1.5 L		

*Maximum duty cycle based on the first working hour in a testing environment.
** Electric/magnetic locks should be fitted on gates 2m+ to protect gate and operator from damage by wind or forced entry.
Lockable in open & close, open only, close only or no lock options.

SUPER FULL TANK 500

Industrial hydraulic swing gate operator suitable for intensive use applications.

Max leaf length of 9m when used with suitable lock in open and closed positions. Note in some applications it may be possible to install on gates up to 4m without the use of electric or magnetic locks.

Physical gate stops required in open and closed positions.

Hydraulic slowdown is standard on all super full tank operators.

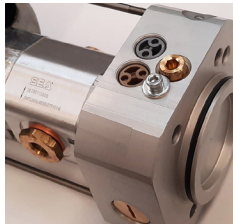
- 500

MM STROKE
- 100

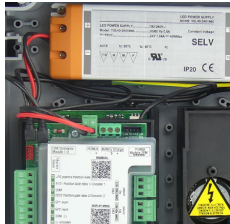
% DUTY CYCLE
- 9.0

MAXIMUM GATE LENGTH

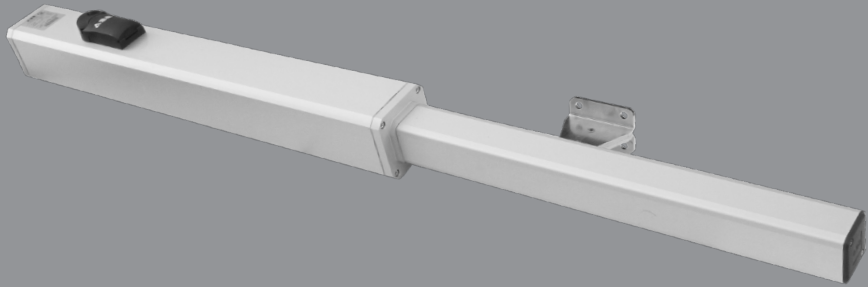
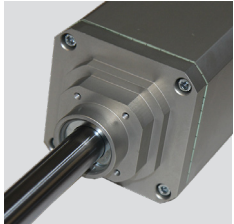
SIX LITRE PUMP



UNIGATE INVERTER EQUIPPED



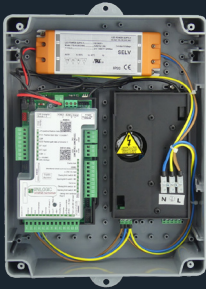
VARIABLE SPEED HIGH-SPEED SHAFT



HYDRAULIC DRIVE Hydraulic operators suit intensive use environments and their high thrust output makes them suitable for extra large gates.

2000KG

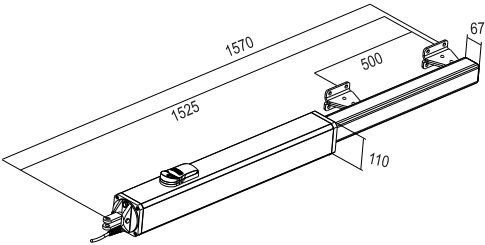
CONTROLLER



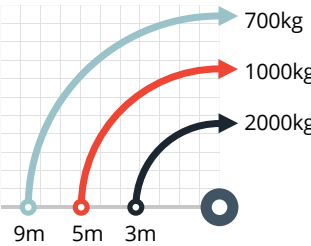
INVERTER EQUIPPED

UNIGATE uses a separate inverter power module and control board to achieve optimum heat management of power module components. The Inverter power module is connected to control board via USB cable.

Details on page 25



MAX. GATE LENGTH TO WEIGHT



ORDER CODE	SFTANK	MAX. GATE WEIGHT	2000 KG
POWER SUPPLY	SINGLE PHASE	MAX. GATE LENGTH	9.0 M**
MOTOR VOLTAGE	3-Phase 230 V (AC)	TIME TO 90°	16.5 SEC
MOTOR POWER	310 W	MAX. TORQUE	25000 N
MAX. OPEN ANGLE	125 °	LIMIT SWITCH	OPEN & CLOSE GATE STOPS REQUIRED
MAX. CYCLES PER HOUR	100*	DIMENSIONS (H-W-L)	110, 110, 1570
DUTY CYCLE	100 %*	WORKING TEMP.	-20 °/+55 ° C
PUMP SIZE	6.0 L		

*Maximum duty cycle based on the first working hour in a testing environment.
** Electric/magnetic locks should be fitted on gates 4m+ to protect gate and operator from damage by wind or forced entry.
Lockable in open & close, open only, close only or no lock options.

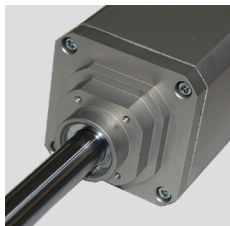
SUPER FULL TANK 1000

The strongest swing gate operator currently on the market.

Note in some applications it may be possible to install on gates up to 12m or 6m without the use of electric or magnetic locks. For industrial and high duty cycle applications.

- 1000 MM STROKE
- 100 % DUTY CYCLE
- 12 MAXIMUM GATE LENGTH

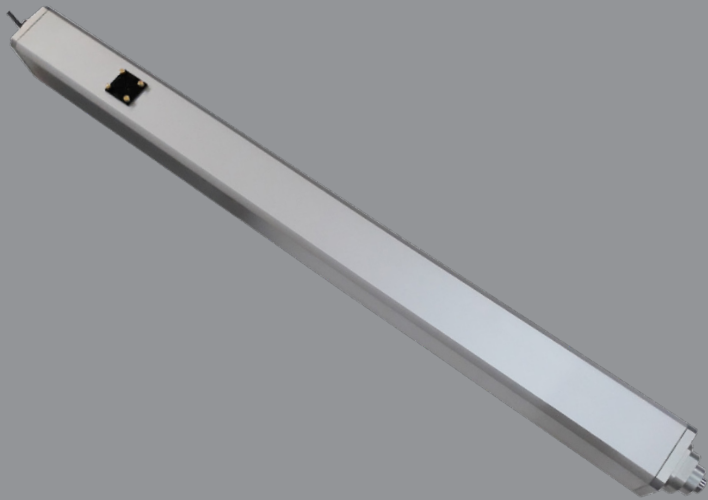
MACHINED FRONT & REAR FLANGES



MANUAL RELEASE



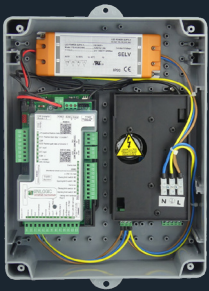
SPHERICAL JOINT FOR STROKE ADJUSTMENT



HYDRAULIC DRIVE Hydraulic operators suit intensive use environments and their high thrust output makes them suitable for extra large gates.

2500KG

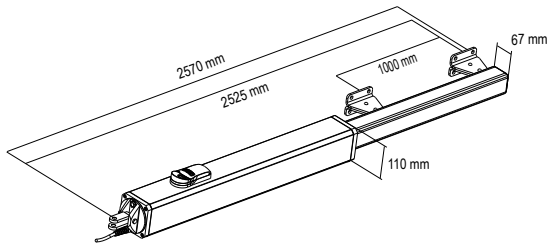
CONTROLLER



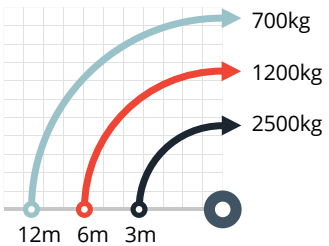
INVERTER EQUIPPED

UNIGATE uses a separate inverter power module and control board to achieve optimum heat management of power module components. The Inverter power module is connected to control board via USB cable.

Details on page 25



MAX. GATE LENGTH TO WEIGHT



ORDER CODE	SFTANK1000	MAX. GATE WEIGHT	2500 KG
POWER SUPPLY	SINGLE PHASE	MAX. GATE LENGTH	12 M**
MOTOR VOLTAGE	3-Phase 230 V (AC)	TIME TO 90°	33 SEC
MOTOR POWER	310 W	MAX. TORQUE	25000 N
MAX. OPEN ANGLE	125 °	LIMIT SWITCH	OPEN & CLOSE GATE STOPS REQUIRED
MAX. CYCLES PER HOUR	40*	DIMENSIONS (H-W-L)	110, 110, 2570
DUTY CYCLE	100 %*	WORKING TEMP.	-20 ° / +55 ° C
PUMP SIZE	6.0 L		

*Maximum duty cycle based on the first working hour in a testing environment
** Electric/magnetic locks should be fitted on gates 6m+ to protect gate and operator from damage by wind or forced entry.

JOINT

Articulated, inverter-equipped hydraulic swing gate operator.

Suits leaves up to 6m or 450kg.

- 8.0 SECONDS TO 90°
- 100 % DUTY CYCLE
- 6.0 MAXIMUM GATE LENGTH



HYDRAULIC DRIVE Hydraulic operators suit intensive use environments and their high thrust output makes them suitable for extra large gates.

455KG

CONTROLLER



INVERTER EQUIPPED

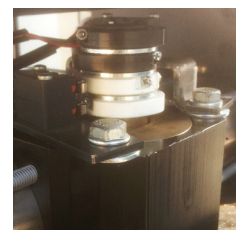
UNIGATE uses a separate inverter power module and control board to achieve optimum heat management of power module components. The Inverter power module is connected to control board via USB cable.

Details on page 25

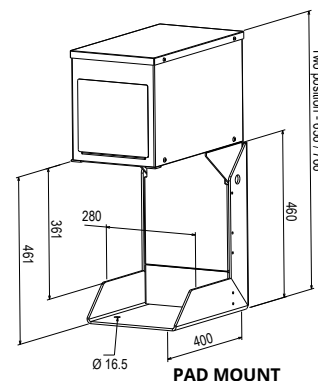
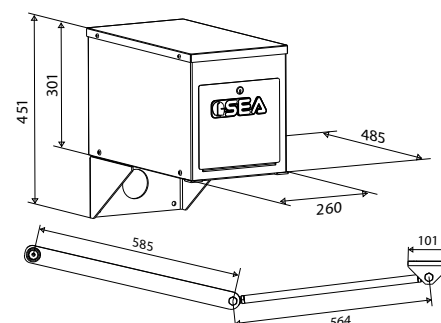
SECURE INTERNAL MANUAL RELEASE



ELECTRONIC LIMIT SWITCH



STAINLESS STEEL ENCLOSURE



MODEL

MASTER - LEFT
SLAVE- LEFT
MASTER - RIGHT
SLAVE- RIGHT

CODE

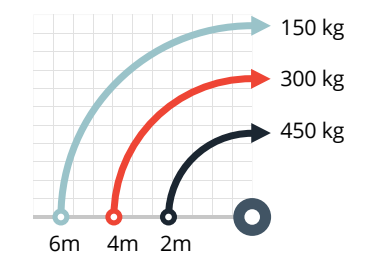
JOINT-MASTER-LH
JOINT-SLAVE-LH
JOINT-MASTER-RH
JOINT-SLAVE-RH

Choose from four models. Master or slave, left or right side.



PAD MOUNT
Base to mount operator on concrete.
AAC-BRAJO

MAX. GATE LENGTH TO WEIGHT



POWER SUPPLY	SINGLE PHASE
MOTOR VOLTAGE	3-Phase 230 V (AC)
MOTOR POWER	280 W
MAX. OPEN ANGLE	100 °
MAX. CYCLES PER HOUR	200*
DUTY CYCLE	100 %*
PUMP SIZE	1.0 L

MAX. GATE WEIGHT	455 KG
MAX. GATE LENGTH	6.0 M**
TIME TO 90°	8 SEC
MAX. TORQUE	560 NM
LIMIT SWITCH	ELECTRONIC
DIMENSIONS (H-W-L)	301, 260, 485
WORKING TEMP.	-20 ° / +55 ° C

*Maximum duty cycle based on the first working hour in a testing environment.

** Electric/magnetic locks should be fitted on gates 2m+ to protect gate and operator from damage by wind or forced entry.

SATURN SUPER FAST 500

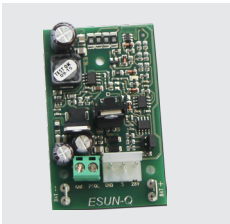
The Saturn's high-level mechanical specification makes it fast, strong, safe and reliable. Housed in a solid die-cast aluminium body with high quality mechanical limit switches.

- 450 MM/SEC GATE SPEED
- 75 % DUTY CYCLE
- 500 MAXIMUM GATE WEIGHT

CATAPHORESIS TREATMENT



OPTIONAL CARDS FOR BATTERY BACK UP AND SOLAR



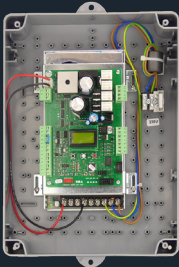
MANUAL RELEASE METAL LEVER AND LOCK



Saturn can be used on solar applications or add battery backup on request.

500KG

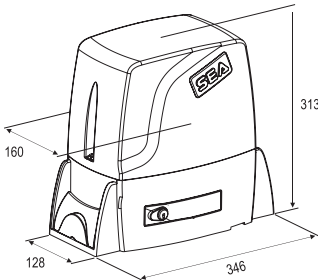
CONTROLLER



DIGITAL PROGRAMMING

SATURN SUPER FAST is supplied with built in USER-1 control panel.

Details on page 26



ORDER CODE	SATURN500	MAX. GATE WEIGHT	500 KG
POWER SUPPLY	SINGLE PHASE	PINION SIZE	Z20
MOTOR VOLTAGE	24 V (DC)	PINION HEIGHT	105 MM
GATE SPEED	TO 450 MM/SEC (27 M/MIN)	LIMIT SWITCH	MECHANICAL
MOTOR POWER	100 W	PROTECTION DEGREE	IP55
MAX. CYCLES PER HOUR	120*	DIMENSIONS (H-W-L)	313, 160, 346
DUTY CYCLE	75 %*	WORKING TEMP.	-20 ° /+55 ° C

*Maximum duty cycle based on the first working hour in a testing environment.

SATURN FAST 1200

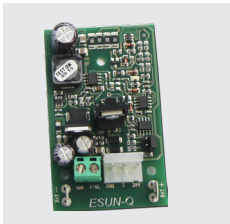
The Saturn's high-level mechanical specification makes it fast, strong, safe and reliable. Housed in a solid die-cast aluminium body with high quality mechanical limit switches.

- 320 MM/SEC GATE SPEED
- 75 % DUTY CYCLE
- 1200 MAXIMUM GATE WEIGHT

OIL BATH LUBRICATION



OPTIONAL CARDS FOR BATTERY BACK UP AND SOLAR



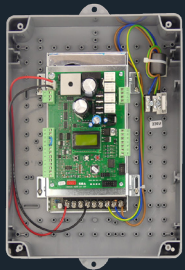
MANUAL RELEASE WITH MICROSWITCH STOP



Saturn can be used on solar applications or add battery backup on request.

1200KG

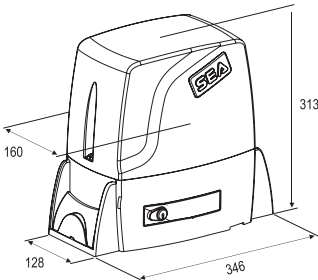
CONTROLLER



DIGITAL PROGRAMMING

SATURN FAST 1200 is supplied with built in USER-1 control panel.

Details on page 26



ORDER CODE	SATURN1200	MAX. GATE WEIGHT	1200 KG
POWER SUPPLY	SINGLE PHASE	PINION SIZE	Z16
MOTOR VOLTAGE	24 V (DC)	PINION HEIGHT	95 MM
GATE SPEED	TO 320 MM/SEC (19 M/MIN)	LIMIT SWITCH	MECHANICAL
MOTOR POWER	100 W	PROTECTION DEGREE	IP55
MAX. CYCLES PER HOUR	90*	DIMENSIONS (H-W-L)	313, 160, 346
DUTY CYCLE	75 %*	WORKING TEMP.	-20 ° /+55 ° C

*Maximum duty cycle based on the first working hour in a testing environment.

BOXER 2000

A powerful, reliable operator at an excellent quality/price ratio.

Inverter driven motor controlled by the UNIGATE-i control panel and oil lubrication makes Boxer 2000 the perfect choice for intensive use with moderate speed.

- 260 MM/SEC GATE SPEED
- 100 % DUTY CYCLE
- 2000 MAXIMUM GATE WEIGHT

UNIGATE INVERTER EQUIPPED



MOTOR & GEARS OIL LUBRICATION



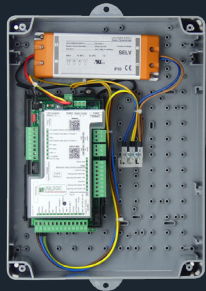
MECHANICAL TWIN DISC CLUTCH



Saturn can be used on solar applications or add battery backup on request.

2000KG

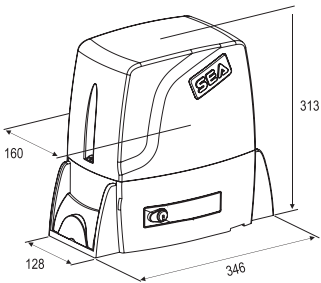
CONTROLLER



INVERTER EQUIPPED

UNIGATE uses a separate inverter power module and control board to achieve optimum heat management of power module components. The Inverter power module is connected to control board via USB cable.

Details on page 25



INVERTER SPEED SETTINGS*

90Hz	260 mm/sec
80Hz	220 mm/sec
70Hz	199 mm/sec
60Hz	172 mm/sec
50Hz	144 mm/sec

ORDER CODE	BOXER2000	MAX. GATE WEIGHT	2000 KG
POWER SUPPLY	SINGLE PHASE	PINION SIZE	Z16
MOTOR VOLTAGE	3-Phase (230 V)	PINION HEIGHT	95 MM
GATE SPEED	TO 260 MM/SEC (19 M/MIN)	LIMIT SWITCH	MECHANICAL
MOTOR POWER	700 W	PROTECTION DEGREE	IP55
MAX. CYCLES PER HOUR	55*	DIMENSIONS (H-W-L)	313, 160, 346
DUTY CYCLE	100 %*	WORKING TEMP.	-20° /+55° C

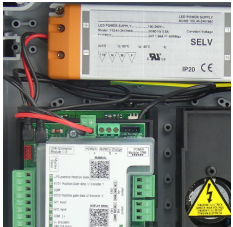


LEPUS INDUSTRIAL 1500 FAST

Designed specifically for industrial applications, Lepus 230V version is inverter equipped with a built in UNIGATE controller and oil bath gearbox and mechanical limit switches.

- 450 MM/SEC GATE SPEED
- 100 % DUTY CYCLE
- 1500 MAXIMUM GATE WEIGHT

UNIGATE INVERTER EQUIPPED



OIL BATH LUBRICATION

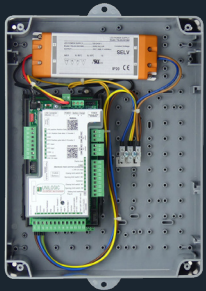


MECHANICAL LIMIT SWITCHES



1500KG

CONTROLLER



INVERTER EQUIPPED

UNIGATE uses a separate inverter power module and control board to achieve optimum heat management of power module components. The Inverter power module is connected to control board via USB cable.

Details on page 25



INVERTER SPEED SETTINGS*

90Hz	450 mm/sec
80Hz	381 mm/sec
70Hz	345 mm/sec
60Hz	297 mm/sec
50Hz	250 mm/sec

ORDER CODE	LEPUS1500	MAX. GATE WEIGHT	1500 KG
POWER SUPPLY	SINGLE PHASE	PINION SIZE	Z20
MOTOR VOLTAGE	3-Phase 230 V (AC)	PINION HEIGHT	108 MM
GATE SPEED	450 MM/SEC (27 M/MIN)	LIMIT SWITCH	MECHANICAL
MOTOR POWER	650 W	PROTECTION DEGREE	IP55
MAX. CYCLES PER HOUR	150*	DIMENSIONS (H-W-L)	410, 158, 322
DUTY CYCLE	100 %*	WORKING TEMP.	-20 °/+55 ° C



LEPUS INDUSTRIAL 2000 230V

Designed specifically for industrial applications, Lepus 230V version is inverter equipped with a built in UNIGATE controller and oil bath gearbox and mechanical limit switches.

- 300 MM/SEC GATE SPEED
- 100 % DUTY CYCLE
- 2000 MAXIMUM GATE WEIGHT

UNIGATE INVERTER EQUIPPED



OIL BATH LUBRICATION

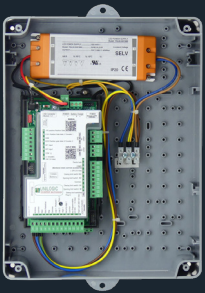


MECHANICAL LIMIT SWITCHES



2000KG

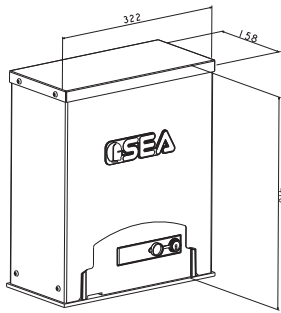
CONTROLLER



INVERTER EQUIPPED

UNIGATE uses a separate inverter power module and control board to achieve optimum heat management of power module components. The Inverter power module is connected to control board via USB cable.

Details on page 25



INVERTER SPEED SETTINGS*

90Hz	300 mm/sec
80Hz	254 mm/sec
70Hz	230 mm/sec
60Hz	198 mm/sec
50Hz	167 mm/sec

ORDER CODE	LEPUS2000	MAX. GATE WEIGHT	2000 KG
POWER SUPPLY	SINGLE PHASE	PINION SIZE	Z20
MOTOR VOLTAGE	3-Phase 230 V (AC)	PINION HEIGHT	108 MM
GATE SPEED	300 MM/SEC (18 M/MIN)	LIMIT SWITCH	MECHANICAL
MOTOR POWER	800 W	PROTECTION DEGREE	IP55
MAX. CYCLES PER HOUR	100*	DIMENSIONS (H-W-L)	410, 158, 322
DUTY CYCLE	100 %*	WORKING TEMP.	-20 °/+55 ° C

*Based on the first working hour in a testing environment.



LEPUS INDUSTRIAL 2000 24V

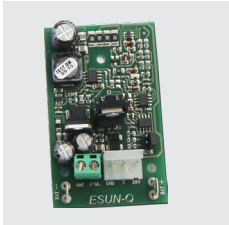
Designed specifically for industrial applications, Lepus 24V version is equipped with a built in 24V USER-1 DG MAXI controller and oil bath gearbox and mechanical limit switches.

- 280 MM/SEC GATE SPEED
- 75 % DUTY CYCLE
- 2000 MAXIMUM GATE WEIGHT

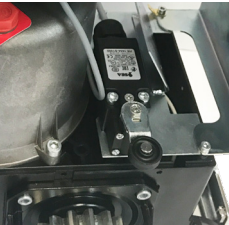
OIL BATH LUBRICATION



OPTIONAL CARDS FOR BATTERY BACK UP AND SOLAR

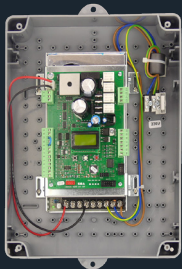


MECHANICAL LIMIT SWITCHES



2000KG

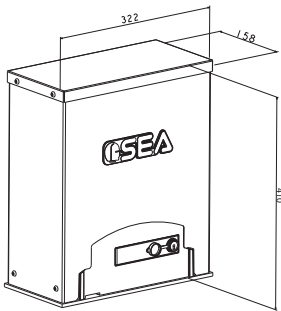
CONTROLLER



DIGITAL PROGRAMMING

LEPUS INDUSTRIAL 2000 24V is supplied with built in USER-1 control panel

Details on page 26



* Maximum duty cycle based on the first working hour in a test environment

** Based on a Z13 pinion size. Other pinions available for different speed and weight variations

*** Other pinion sizes available on request.
Z16 Pinion for increase in speed to 350mm/sec, with max weight 1200kg
Z20 pinion for increase in speed to 450mm/sec with a max weight 500KG

ORDER CODE	LEPUS200024V	MAX. GATE WEIGHT	2000 KG
POWER SUPPLY	SINGLE PHASE	PINION SIZE	Z13***
MOTOR VOLTAGE	24 V (DC)	PINION HEIGHT	92 MM
GATE SPEED	TO 280 MM/SEC (17 M/MIN)**	LIMIT SWITCH	MECHANICAL
MOTOR POWER	100 W	PROTECTION DEGREE	IP55
OPERATIONS PER HOUR	80*	DIMENSIONS (H-W-L)	410, 158, 322
DUTY CYCLE	75 %*	WORKING TEMP.	-20 °/+55 ° C



BIG 2000

A high speed, heavy-duty motor for industrial sliding gates to 2000kg with high-quality stainless steel cover. The hardened, heat-treated mechanicals and oil lubrication system ensure maximum long-term performance and extended life.

All BIG operators feature SEA's own Unigate inverter. This provides maximum speed adjustments and ramp up/down accuracy and working in unison with the Electro-brake, a safety override device to constantly monitor and control the gate's inertia at all times.

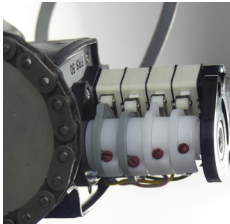
- 630

MM/SEC GATE SPEED
- 100

% DUTY CYCLE
- 20

MAXIMUM GATE LENGTH

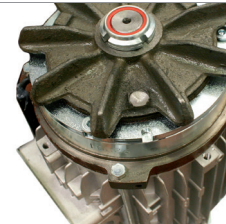
BUILT-IN LIMIT SWITCHES



STAINLESS STEEL COVER

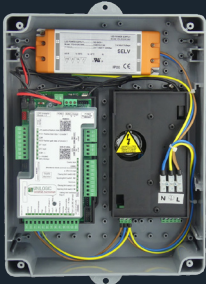


ELECTROBRAKE



2000KG

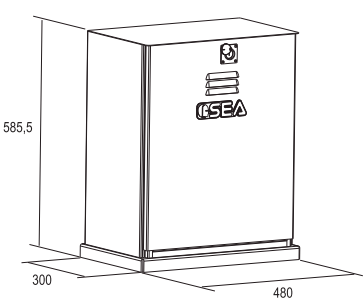
CONTROLLER



INVERTER EQUIPPED

UNIGATE uses a separate inverter power module and control board to achieve optimum heat management of power module components. The Inverter power module is connected to control board via USB cable.

Details on page 25



BASE MOUNT
Base for setting in concrete.
AAC-BIGBASE

INVERTER SPEED SETTINGS*

90Hz	630 mm/sec
80Hz	533 mm/sec
70Hz	483 mm/sec
60Hz	416 mm/sec
50Hz	350 mm/sec

ORDER CODE	BIG2000	MAX. GATE WEIGHT	2000 KG
POWER SUPPLY	SINGLE PHASE	MAX. GATE LENGTH	20 M**
MOTOR VOLTAGE	3-Phase 230 V (AC)	PINION SIZE	Z24
MOTOR POWER	750 W	PINION HEIGHT	155 MM
GATE SPEED	TO 630 MM/SEC (38 M/MIN).	MAX. TORQUE	70 NM
MAX. CYCLES PER HOUR	180*	LIMIT SWITCH	MECHANICAL-ELECTRONIC
DUTY CYCLE	100 %*	DIMENSIONS (H-W-L)	585, 480, 300
		WORKING TEMP.	-20 °/+55 ° C

*Based on the first working hour in a testing environment.
** Gates 15m+ requires special limit switch

BIG 4000

A fast, heavy-duty motor for industrial sliding gates to 4000kg with high-quality stainless steel cover. The hardened, heat-treated mechanicals and oil lubrication system ensure maximum long-term performance and extended life.

All BIG operators feature SEA's own Unigate inverter. This provides maximum speed adjustments and ramp up/down accuracy and working in unison with the Electro-brake, a safety override device to constantly monitor and control the gate's inertia at all times. It stops heavy gates instantly.

- 400 MM/SEC GATE SPEED
- 100 % DUTY CYCLE
- 4000 MAXIMUM GATE WEIGHT

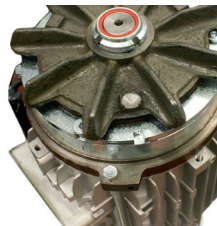
BUILT-IN LIMIT SWITCHES



STAINLESS STEEL COVER

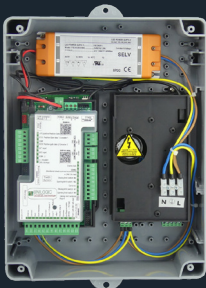


ELECTROBRAKE



4000KG

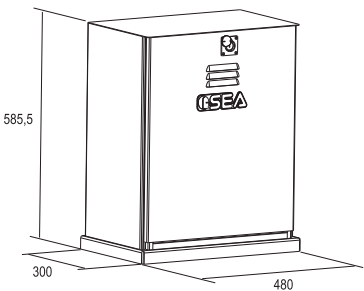
CONTROLLER



INVERTER EQUIPPED

UNIGATE uses a separate inverter power module and control board to achieve optimum heat management of power module components. The Inverter power module is connected to control board via USB cable.

Details on page 25



Z24 M4 pinion available on request.



BASE MOUNT
Base for setting in concrete.
AAC-BIGBASE

INVERTER SPEED SETTINGS*

90Hz	400 mm/sec
80Hz	338 mm/sec
70Hz	307 mm/sec
60Hz	264 mm/sec
50Hz	222 mm/sec

ORDER CODE	BIG4000	MAX. GATE WEIGHT	4000 KG*
POWER SUPPLY	SINGLE PHASE	MAX. GATE LENGTH	N/A
MOTOR VOLTAGE	3-Phase 230 V (AC)	PINION SIZE	Z12 M6
MOTOR POWER	950 W	PINION HEIGHT	96 MM
GATE SPEED	TO 400 MM/SEC (24 M/MIN).	MAX. TORQUE	140 NM
MAX. CYCLES PER HOUR	120*	LIMIT SWITCH	MECHANICAL
DUTY CYCLE	100 %*	DIMENSIONS (H-W-L)	585, 480, 300
		WORKING TEMP.	-20 °/+55 ° C

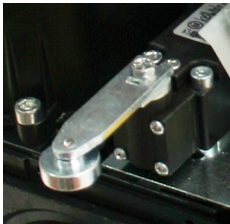
*Based on the first working hour in a testing environment.
** Max gate weight based on use with M6 pinion. Consult with Downee for appropriate pinion based on application.

BIG 6000

A ultra heavy-duty motor for industrial sliding gates to 6000kg with high-quality stainless steel cover. The hardened, heat-treated mechanicals and oil lubrication system ensure maximum long-term performance and extended life.

- 160 MM/SEC GATE SPEED
- 60 % DUTY CYCLE
- 6000 MAXIMUM GATE WEIGHT

BUILT-IN LIMIT SWITCHES



STAINLESS STEEL COVER

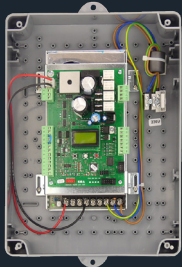


ELECTROBRAKE



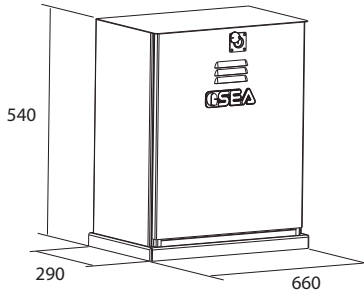
6000KG

CONTROLLER



DIGITAL PROGRAMMING

BIG 6000 is supplied with a GATE-1 digital three-phase control board.



ORDER CODE	BIG6000	MAX. GATE WEIGHT	6000 KG
MOTOR VOLTAGE	3-Phase (400 V)	MAX. GATE LENGTH	N/A
MOTOR POWER	3000 W	PINION SIZE	M6 16 TOOTH
GATE SPEED	TO 160 MM/SEC (10 M/MIN).	PINION HEIGHT	151 MM
DUTY CYCLE	60 %*	MAX. TORQUE	9000 N
		LIMIT SWITCH	MECHANICAL
		DIMENSIONS (H-W-L)	540, 660, 290
		WORKING TEMP.	-20° /+55° C

*Maximum duty cycle based on the first working hour in a testing environment.

Product available upon request - lead times will apply.

SPRINT

Sprint is a hydraulic boom operator for industrial use on driveways up to 6m wide.

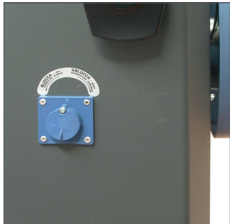
Includes 5m boom with illuminated LED profile.

- 4 TIME TO 90°
- 100 % DUTY CYCLE
- 6.0 MAXIMUM BOOM LENGTH

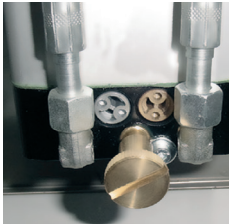
STAINLESS STEEL BODY UPON REQUEST



SIMPLE , SECURE RELEASE SYSTEM

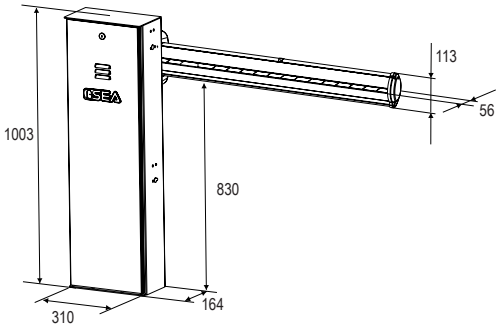


FORCE ADJUSTMENT BY-PASS VALVES

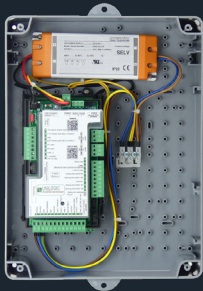


HYDRAULIC DRIVE Hydraulic and inverter driven motors are suited to intensive use environments with speed adjustment in the open and closing cycles.

With no wearing gears due to the hydraulic circuit, they are ideal for high duty cycles. This coupled with the fact the inverter does not have any triac capacitors to increase temperature, it becomes the ideal solution for intensive use.



CONTROLLER



INVERTER EQUIPPED

UNIGATE uses a separate inverter power module and control board to achieve optimum heat management of power module components. The Inverter power module is connected to control board via USB cable.

Details on page 25



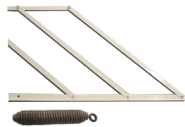
FORK SUPPORT
Boom catch.

ABG-SUPLIGHT



BOOM SUPPORT
Folding support.

ABG-SUPL



BOOM SKIRT KIT
Skirt and spring kit for 4m boom.

ABG-SK4



LED STRIP
Light strip for 5m & 8m boom.
ABG-LED5 (5m)
ABG-LED8 (8m)



SPRINT BOOM
5m & 6m boom with spring, rubber & LED profile.
ABG-LIGHT5 (5m)
ABG-LIGHT6 (6m)

ORDER CODE	ABG-SPRINT
POWER SUPPLY	SINGLE PHASE
MOTOR VOLTAGE	3-Phase 230 V (AC)
MOTOR POWER	220 W
TIME TO 90°	4-7 SEC
MAX. CYCLES PER HOUR	300*
DUTY CYCLE	100 %*

PUMP CAPACITY	1.5 L
MAX. BOOM LENGTH	6 M
LIMIT SWITCH	MECHANICAL
PROTECTION DEGREE	IP55
DIMENSIONS (H-W-L)	1003, 164, 310
WORKING TEMP.	-20° /+55° C

* Maximum duty cycle based on the first working hour in a testing environment.

VELA INDUSTRIAL

Vela is a hydraulic boom operator for industrial use on driveways up to 7.5 m wide.

- 8 TIME TO 90°
- 100 % DUTY CYCLE
- 7.5 MAXIMUM BOOM LENGTH

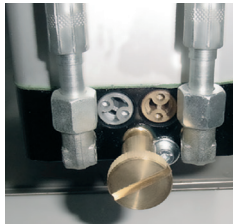
STAINLESS STEEL BODY UPON REQUEST



TWO-SIDED BOOM MOUNT



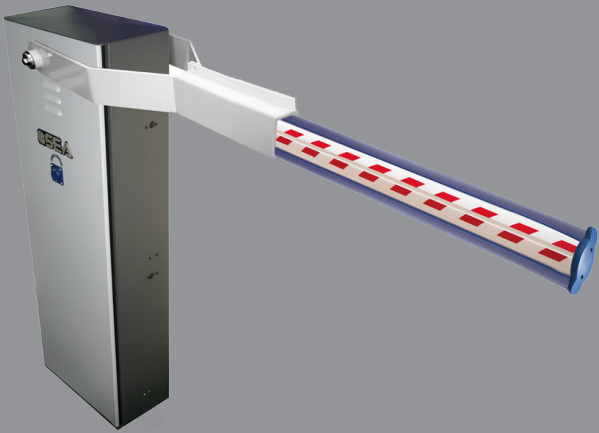
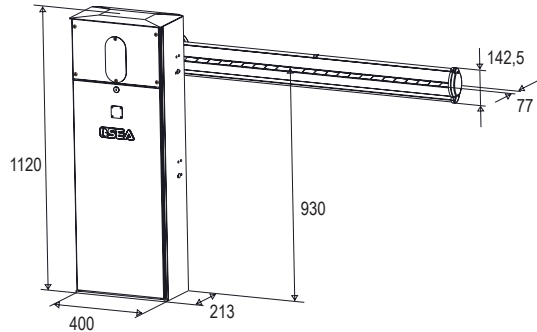
FORCE ADJUSTMENT BY-PASS VALVES



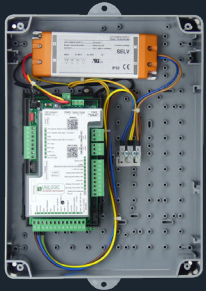
HYDRAULIC DRIVE

Hydraulic and inverter driven motors are suited to intensive use environments with speed adjustment in the open and closing cycles.

With no wearing gears due to the hydraulic circuit, they are ideal for high duty cycles. This coupled with the fact the inverter does not have any triac capacitors to increase temperature, it becomes the ideal solution for intensive use.



CONTROLLER



INVERTER EQUIPPED

UNIGATE uses a separate inverter power module and control board to achieve optimum heat management of power module components. The Inverter power module is connected to control board via USB cable.

Details on page 25



FORK SUPPORT
Boom catch.

ABG-SUPVELA



BOOM SUPPORT
Folding support.

ABG-SUPL



LED STRIP
Light strip for 8m boom.

ABG-LED8

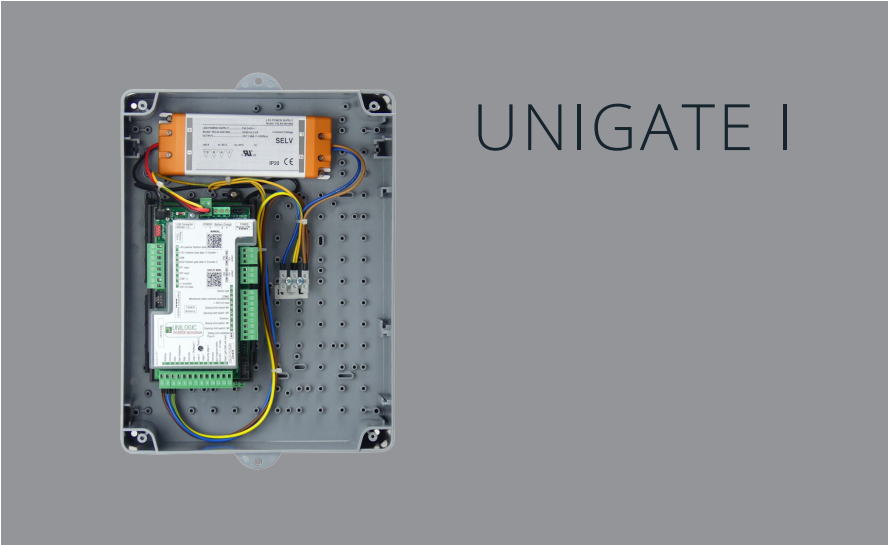


VELA BOOM
7.5m oval boom kit with fork mount, spring, rubber & LED profile.

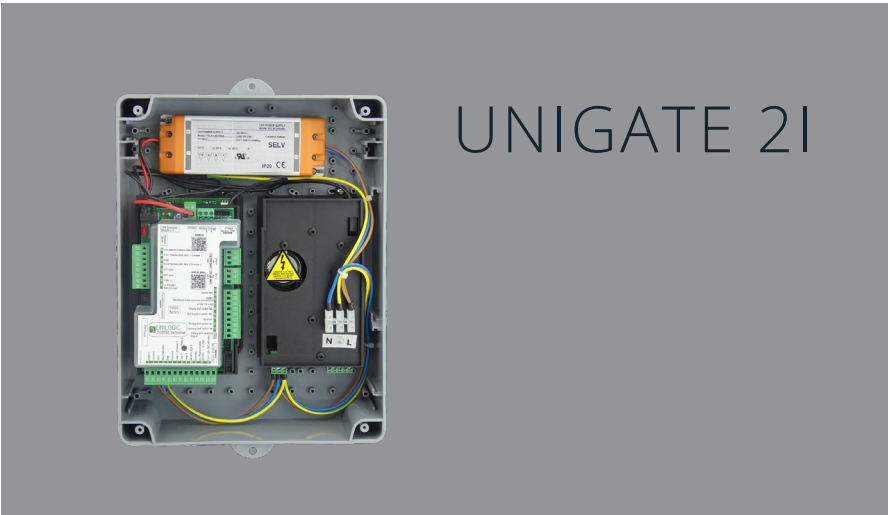
ABG-JSF75

ORDER CODE	ABG-VELA	PUMP CAPACITY	2.0 L
POWER SUPPLY	SINGLE PHASE	MAX. BOOM LENGTH	7.5 M
MOTOR VOLTAGE	3-Phase 230 V (AC)	LIMIT SWITCH	MECHANICAL
MOTOR POWER	220 W	PROTECTION DEGREE	IP55
TIME TO 90°	8-12 SEC	DIMENSIONS (H-W-L)	1120, 213, 400
MAX. CYCLES PER HOUR	120*	WORKING TEMP.	-20° / +55° C
DUTY CYCLE	100 %*		

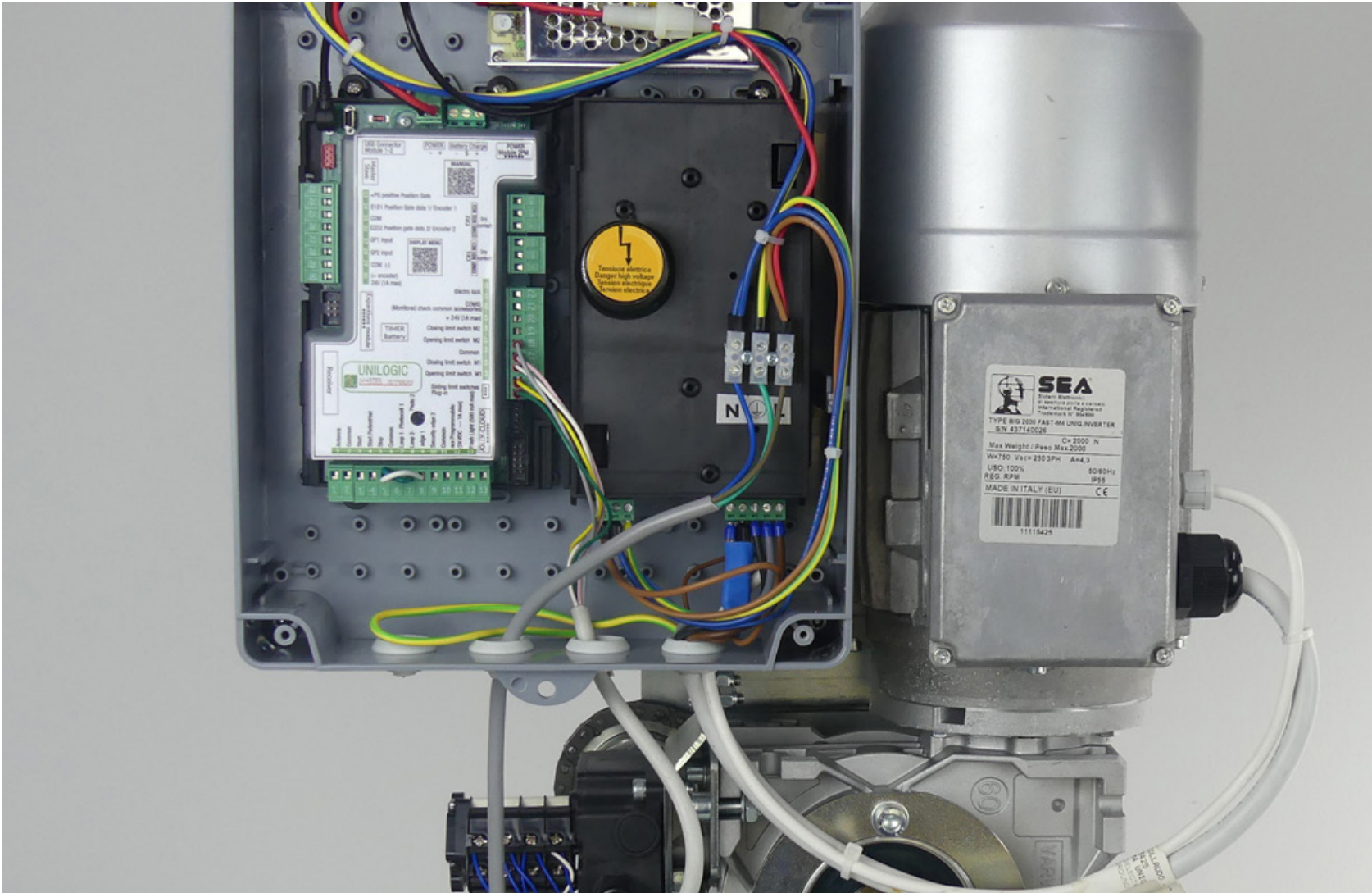
*Maximum duty cycle based on the first working hour in a testing environment



UNIGATE 1



UNIGATE 21



UNIGATE WITH INVERTER TECHNOLOGY

Designed, engineered and manufactured by SEA specifically for gate automation applications, and minimise electronic "noise". Features completely variable speed control via frequency, to ensure motor torque is maintained through the speed range, including motor slow down. Motor heat is kept to a minimum due to Inverter technology. Motor direction can be changed by parameter settings, no need to rewire motor phases. UNIGATE uses a separate inverter power module and control board to achieve optimum heat management of power module components. The Inverter power module is connected to the control board via USB cable.

UNILOGIC CONTROLLER *The Universal Controller for All Applications*

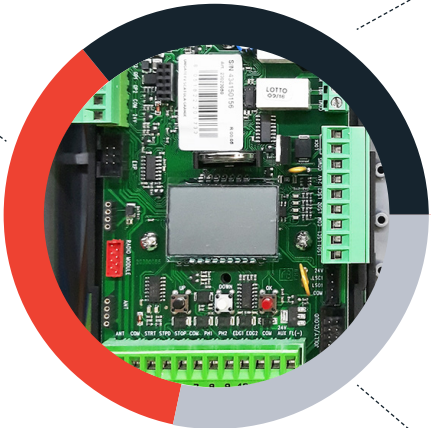
UNIVERSAL POWER

One Unilogic controller features a built-in potentiometer. This allows Unigate to work across the entire range of power options.

- 24Vdc
- 230Vac
- 3-Phase inverter
- 36Vdc Brushless

With the digital controller providing a platform to work with all SEA operators including swing, slide and boom gates.

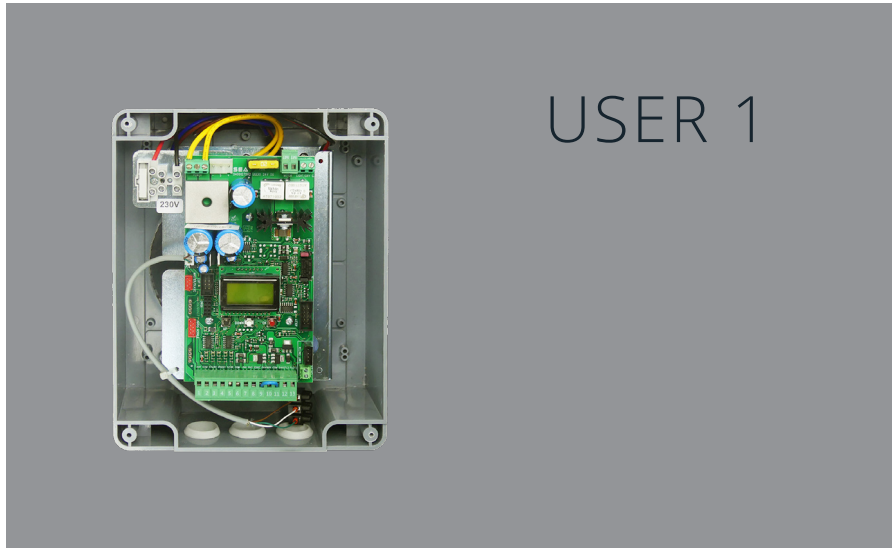
Manages one, two or up to FOUR operators.



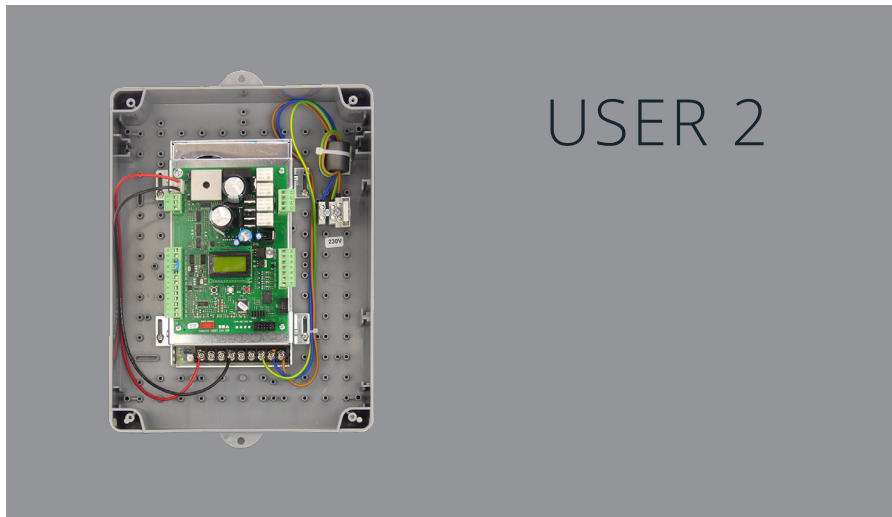
- #### FEATURES
- Large 16 character display. Backlit to be visible from any angle.
 - Built-in 24hr timer with back-up battery.
 - Two programmable relays
 - Manage up to 4 limit switches
 - 24V auxiliary management
 - Management of 2 dry contacts
 - External power supply via switching
 - Open-Close-Stop with separate inputs

BI-DIRECTIONAL

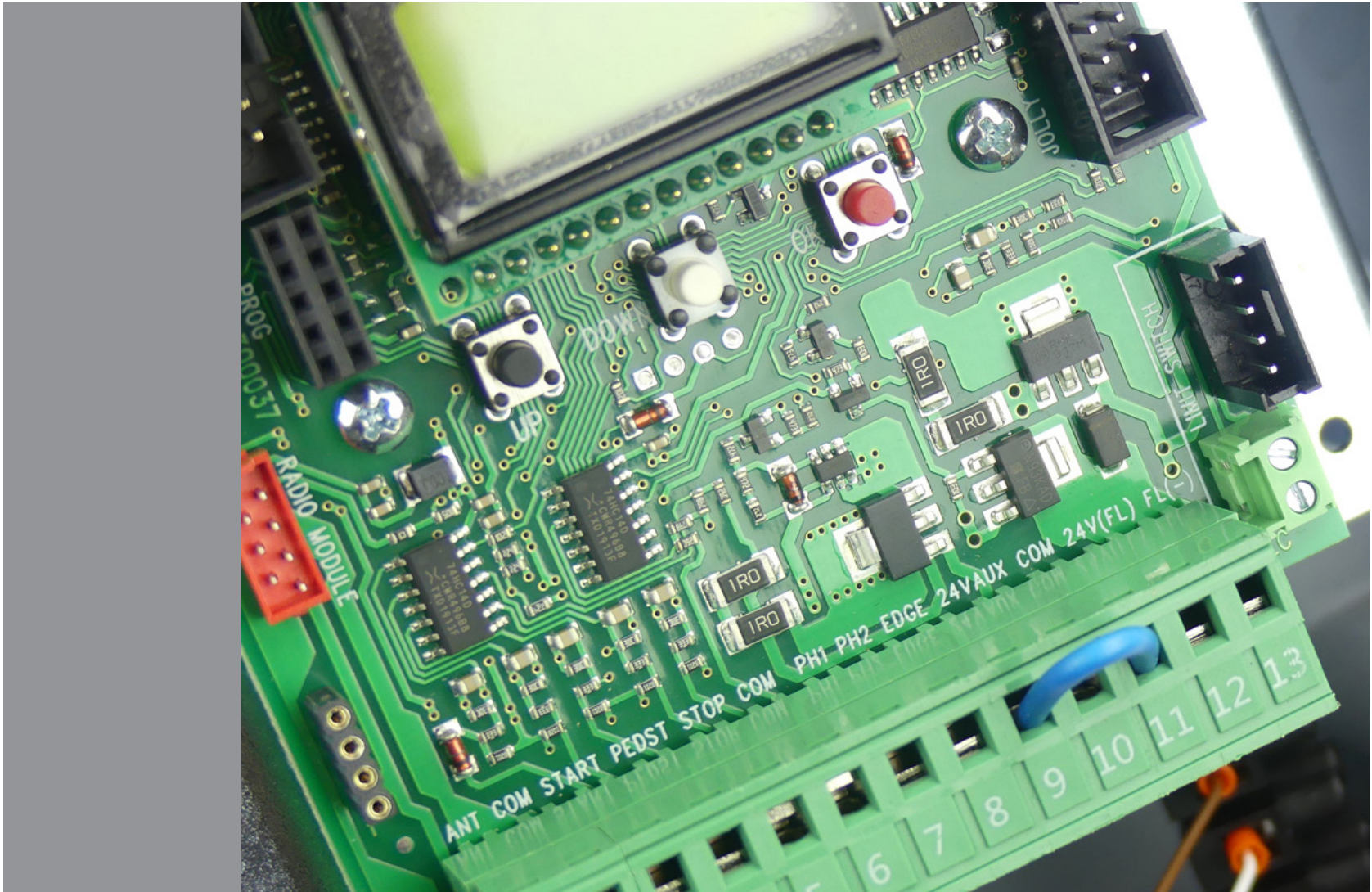
Manages mono and bi-directional encoders to for two-way communication with Eagle Transceiver remotes.



USER 1



USER 2



DIGITAL CONTROLLER

*The USER-1 control panel is 24V Digital control unit for sliding gate operators. With the use of the JOLLY-3 programmer, the set up of sliding gate automation is made easy.
The USER-2 control panel is used to operate single and double leaf swing gates. Again the use of the JOLLY-3 programming makes the install straight forward. Simple speed, force and slowdown adjustment of both USER control boards allows for flexibility on site. With the option of battery backup or solar this control panel allows versatility in different applications.*

USER-1

- Prepared for Master/Slave function
- Limit switch connector
- More resistance components for intensive use
- Max capacity 300 mA transformer 24V accessories
- Management of photocells 10K
- Adjustable slowdown in open and close
- Adjustable leaf delay for open and close
- Adjustable pedestrian opening
- 24V LED warning lamp
- Built-in radio decoding for Plug-In Receiver
- Adjustable amperometric-type inversion on obstacle
- Photocells self-test
- Balanced or standard safety edge management
- Motor and limit switch inversion (right /left mounting)
- Automatic close setting
- Start in pause setting
- Courtesy light setting - up to 4 minutes
- Cycle counter

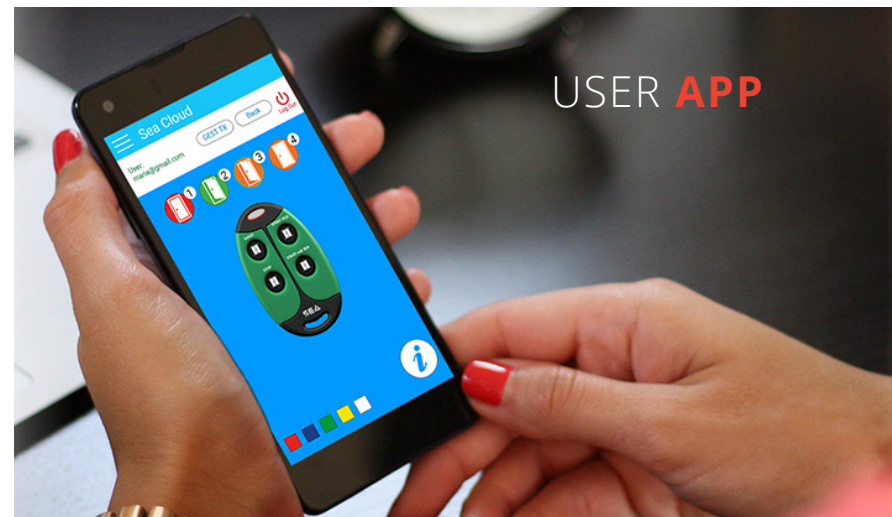
USER-2

- Simple programming
- Compatible with Jolly 3
- Adjustable slowdown in open and close
- Separate speed settings for each leaf
- Leaf delay for open and close
- Adjustable pedestrian opening
- 24V LED warning lamp
- Cycle counter
- Settable photocell inputs and self-test
- Working times self-learning
- Built-in radio decoding for Plug-in Receiver
- Courtesy light setting - up to 4 minutes
- Prepared for encoder management
- Adjustable amperometric-type inversion on obstacle
- Balanced or standard safety edge management
- Low power consumption in stand-by
- Optional external module for traffic light management
- Max capacity 250 mA transformer 24V accessories
- Dead-man, automatic, security, step-by-step type-1, step-by-step type-2, semi-automatic 1, semi-automatic 2

COMING SOON

USER APP

APP to open and check the status of a gate.
No monthly fee.



INSTALLER APP



SEA CLOUD

Remote management system allows you to connect remotely to site via SEA Cloud control units. View an operators display, and operate it remotely as if you were on site.

Available on Android or iPhone to operate garage doors, gates and boom gates. Easy connection to your home through WiFi or LAN cable.

REMOTE PROGRAMMING

APP for managing SEA automation systems wherever you are via smartphone, tablet or computer.

Program remotely and receive diagnostics by email.

Overview of events and access with timetable, like an access control.

Periodical maintenance reminders based on cycles.

Assign remote control to several end-users in order to:

- View status of a gate
- Change pause time
- Change slowdown speeds



COCCINELLA FM
FM frequency & oversize
aerial provide long distance
signal. Use with FM Receiver.
AAC-LONGRANGE4



COCCINELLA 2
2-channel remote with LED
signal light and silicone buttons.
AAC-UNIROLL-2



COCCINELLA 4
4-channel remote with LED
signal light and silicone buttons.
AAC-UNIROLL-4



EAGLE
Bi-directional 4-channel
remote with metal edges. Two LED
functions. Up to 100m range.
AAC-EAGLE-4



AXY CARD READER
125 KHz with poly cover &
resinated GAND Protocol 26/30
bit. Includes 1m cable.
AAC-AXY



READ
Universal swipe card reader.
AAC-READ



SWIPE CARDS REWRITE CARDS
Packs of 10. Packs of 10.
AAC-CARD AAC-CARDRW



UNISWIPE
Control module for proximity
readers.
AAC-UNISWIPE



ROCK WIRELESS KEYPAD
Long-range (up to 70m)
2-channel wireless keypad. 433
MHz.
AAC-ROCK



EYES 2 PHOTOCELLS
Anti-vandal metal cover and
body. Up to 30m range. 12-24V
power.
AAC-EYES2



FLIP PHOTOCELLS
Up to 15m range. Uses 12-24V
Vac-Dc power. 180° adjustable.
AAC-FLIP



FLIP BATTERY PHOTOCELLS
Battery-powered transmitter with
power-saving motion sensor.
Up to 30m range.
ACC-FLIPBAT



12V VERTICAL LOCK
Locks are recommended to avoid
wind damage on 2m+ gates or
hardware.

AAC-VERLOCK12



24V VERTICAL LOCK
Locks are recommended to avoid
wind damage on 2m+ gates or
hardware.

AAC-VERLOCK24



REFLEX PHOTOCELLS
Reflective photocell up to
10m. Adjustable sensitivity. 10K
Resistance for safety.

AAC-REFLEX



AAC-ANT-SEA
433 Mhz antenna includes
swivel base and cable.

AAC-ANTSEA



PLUG-IN RECEIVER
2-channel universal receiver with
2nd channel programmable in
bistable and/or timed mode.

AAC-RECUNI-PLUG



UNIVERSAL RECEIVER
2-channel universal receiver with
2nd channel programmable in
bistable and/or timed mode.

AAC-RECUNI



SIGNAL BOX FM
Compatible with Coccinella FM
remote. Range to 300m subject
to environment. Features 'Stay
open' latching function.
AAC-RECLONG



SIGNAL BOX
External 4-channel universal
receiver. IP55.
AAC-RECUNI-IP

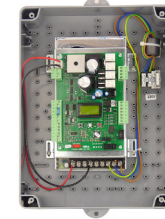
ACCESSORIES & ELECTRONICS

Common spare parts also available.



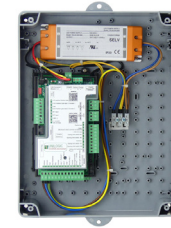
USER-1 24V DG MAXI
Controller with built in transform-
er housed in an external enclo-
sure for 24V slide gate operators.

USER-1



USER-2 24V DG SW
Controller with built in transform-
er housed in an external enclo-
sure for 24V swing gate operators.

USER-2



UNIGATE-I
In-built timer plus inverter for use
with one motor. Includes cover.

UNIGATE-I



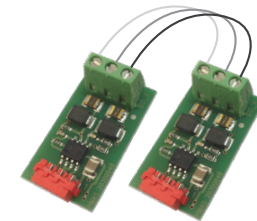
UNIGATE-2I
In-built timer plus twin invert-
ers for use with two motors.
Includes cover.

UNIGATE-2I



ESUN Q
Add-on card for battery backup
option & solar panel.

AAC-ESUNQ (batteries)
AAC-ESUNQ-PLUS (solar)



MASTER-SLAVE KIT
Connects 2 controllers to operate
in Master/Slave mode.
Suits USER-1 control board.
BIPART



CLOUD BOARD
Manage operators remotely via
cloud board.
Coming soon!
AAC-SEACLOUD



JOLLY 3
Programming unit for Unigate &
DG controllers.

AAC-JOLLY3

01

DOWNEE HEAD OFFICE

70 William Angliss Drive

Laverton North, Victoria
3026

Phone

(03) 9300 5160

Fax

(03) 9311 2030

Email

team@downee.com.au

Website

downee.com.au

Downee