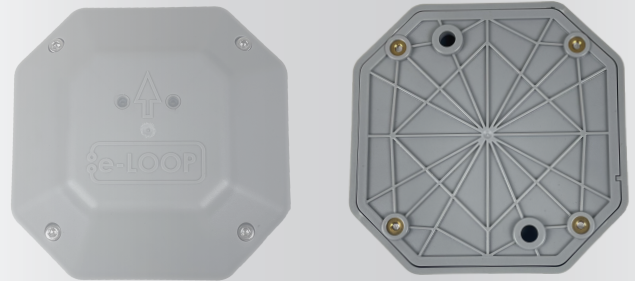


Microtech Designs Domestic e-loop

The Microtech Designs Domestic Wireless Vehicle Detection System uses magnetometer sensors to detect the presence and movement of vehicles. These detections are transmitted to a nearby Microtech transceiver for gate activation. The sensors are installed on the surface of entry or exit passages using dynabolts, contain two replacable AA batteries, and can withstand almost any vehicle.



Functions / Features

Lower power consumption

3-axis magnetometer for vehicle detection

- 8 Hz sampling rate
- Auto-calibration
- Exit/Entry detection mode

Fast and simple installation

- Quick non-permanent installation

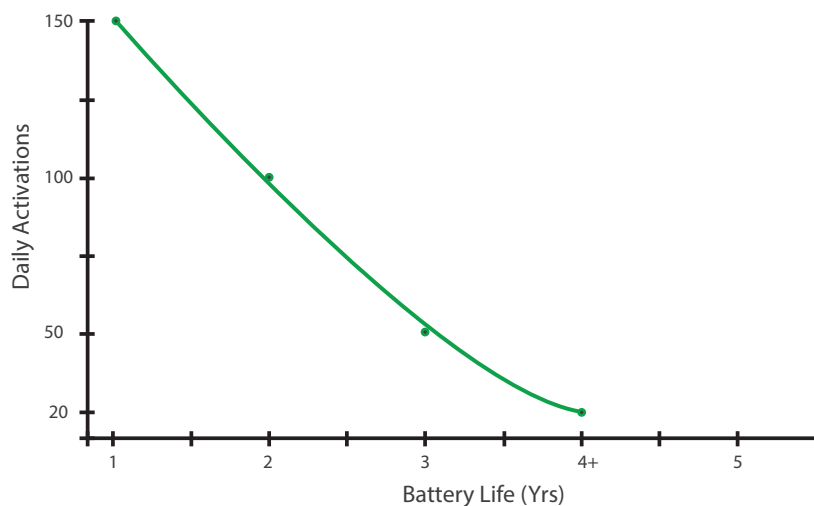
Up to 5 year battery life

- Compact design
- Compatible with various gates

Reliable radio communications with transceiver

- Reliable radio communication
- High security 128-Bit AES Encryption

Battery Life



Radio Specifications

Frequency	433.39 MHz
Modulation	FSK
Bitrate	9.6 kbps
Bandwidth	250 kHz
Antenna Type	PCB
Nominal Output Power	10 dBm
Receive Sensitivity	-126.2 dBm
Security	128-Bit AES Encryption
Spurious Emmissions	PCB

Compliance

Safety	CE Approved
EMC	<p>Tested to: EN 301 489-1 V2.2.3 "ElectroMagnetic Compatibility (EMC) standard for radio equipment and services; Part 1: Common technical requirements; Harmonised Standard for ElectroMagnetic Compatibility" Including a)_Emissions to EN 55032 "Electromagnetic compatibility of multimedia equipment". b)_ Transmitter and receiver test to EN 300 220-1 V3.1.1 'Short Range Devices (SRD) operating in the frequency range 25MHz. to 1000MHz; Part 1: Technical Characteristics and methods of measurement." c)_Immunity Tests to EN 301 489-1</p>

Power, Physical and Environment

Power	2 * 1.5 V 3000ma
Dimensions	120*120*30mm
Weight	500g
Environment	<ul style="list-style-type: none"> • designed for above ground mounting • IP68 ingress protection
Operating Temp	-20° to 80° C

Magnetic Detection Areas

